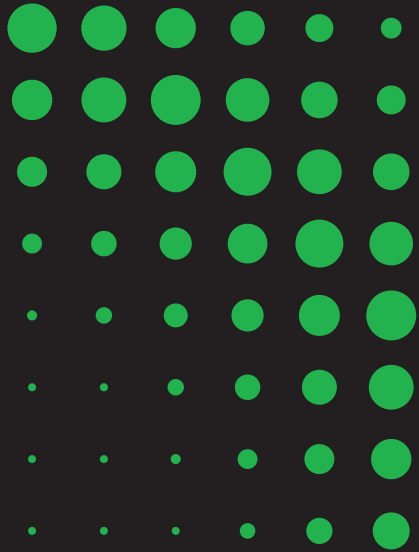


Piab gives you service all over the world.  
To find your local distributor, please visit [www.piab.com](http://www.piab.com)



Art. No 0243519, Rev.01  
Piab AB, 2022-09

**piab** Evolving automation

# Manual

## Docking Station for the piCOBOT® family



**piab**

### Technical data - Docking station

Description	Unit	Value
Weight - Docking station 105-125	g [oz]	737 [26.0]
Docking station 105-165		870 [30.7]
Materials	-	Al, SS, POM, NBR.
Max. recommended payload (gripper)	kg [lb]	3.0 [6.6]

### Docking station and Tool changer for the piCOBOT® family

The tool changer enables automatic or manual change between gripping tools attached to the piCOBOT® or piCOBOT® L unit. This reduces downtime and increases flexibility when piCOBOT® can pick up different tools from the docking stations to accommodate for different lifting objects. Automatic tool changing is achieved when the tool changer is combined with a docking station.

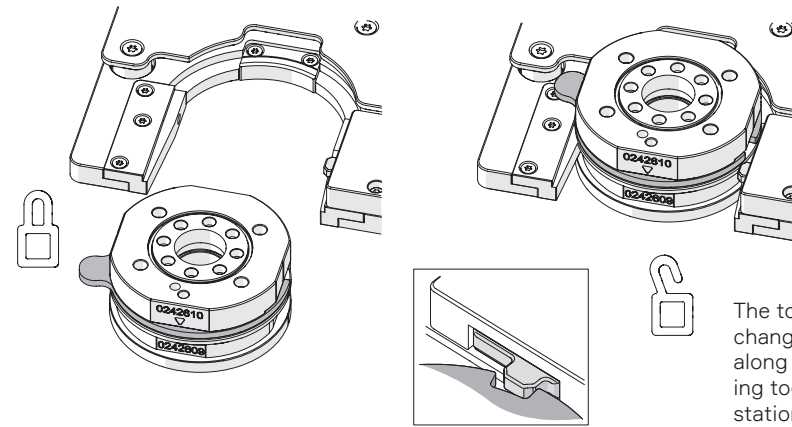
The tool changer consists of two halves. The tool side half of the tool changer can be mounted to an adjustable gripper, a foam gripper or a custom-built gripping solution.

The docking station is intended to be installed in a horizontal orientation.



This manual is available in other languages at [piab.com](http://piab.com)

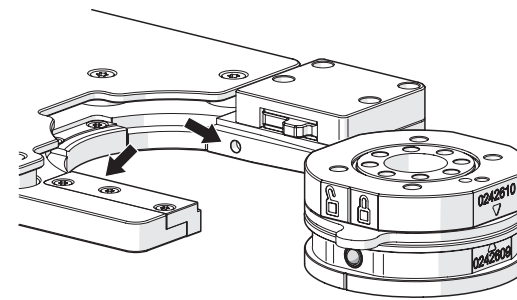
### Locking and unlocking function



When inserted into the docking station, the tool changer locking mechanism is unlocked.

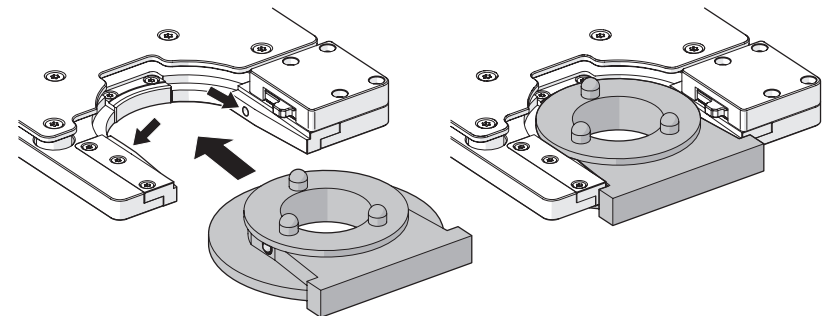
The tool side of the tool changer (art no 0242609), along with any attached lifting tool, is left in the docking station.

The robot with the attached pump side of the tool changer (art no 0242610) can then move and pick up another end-of-arm lifting tool.



The tool changer is held in place in the docking station by two spring plungers.

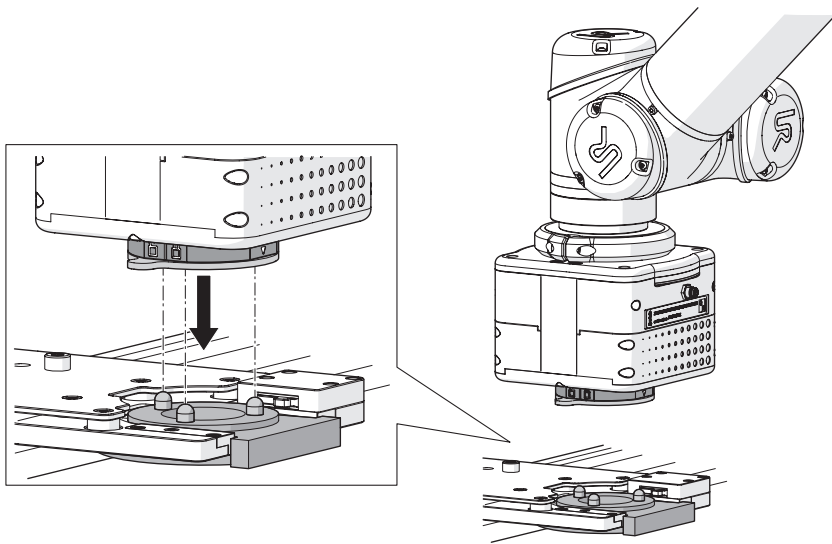
### Calibrate the position of the docking station



1

Insert the tool changer calibration plate (shown in grey, art no 0243226) into the docking station slot.

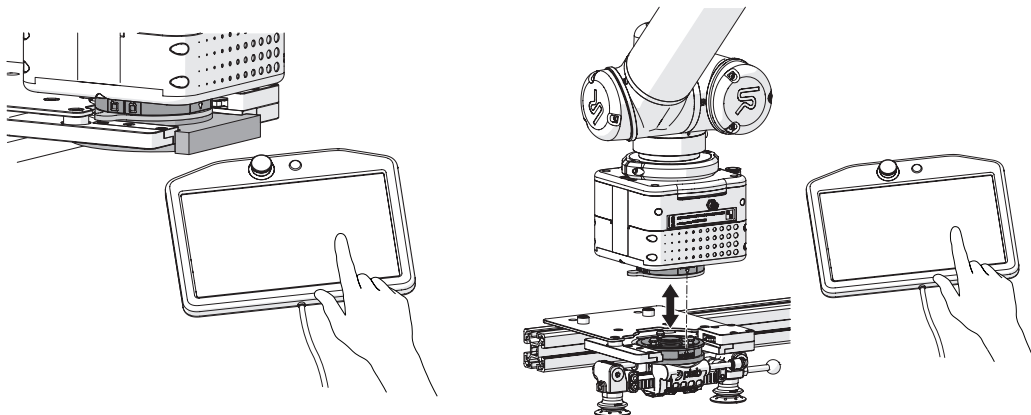
## Calibrate the position of the docking station



2

Adjust the position of the robot arm coarsely by bringing it close to the docking station by hand. The tool changer halves should line up - the three knobs on the bottom half (installer part) with the holes on the upper half (attached to pump and robot arm).

The docking station is intended to be installed in a horizontal orientation.



3

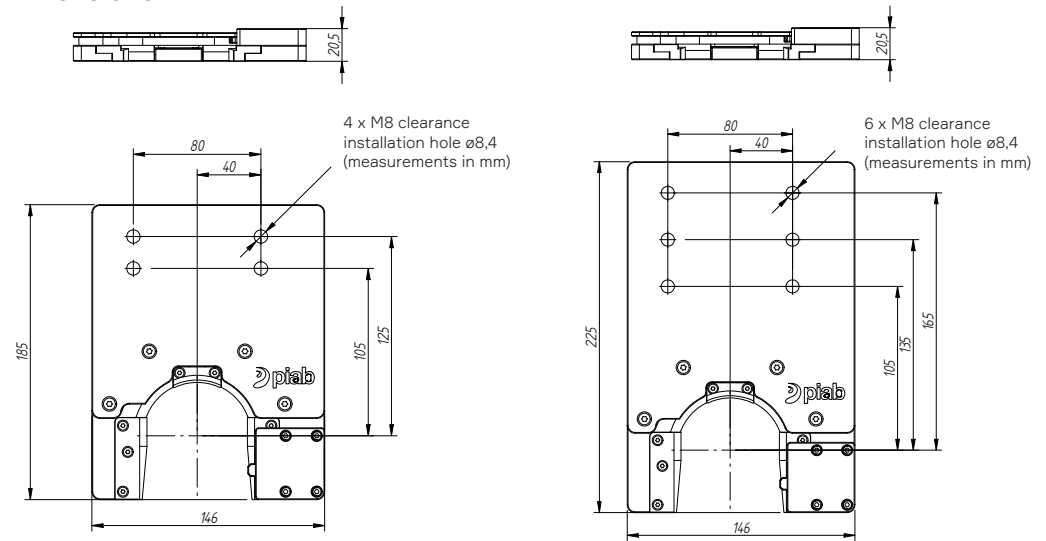
Further adjust the robot arm position with the robot controller. Now the position of the docking station is calibrated.

4

Exchange the calibration plate for the tool changer tool half (art no 0242609) and insert it, along with any attached lifting tool, into the docking station slot. Fine adjust the position of the robot arm with the robot controller.



## Dimensions

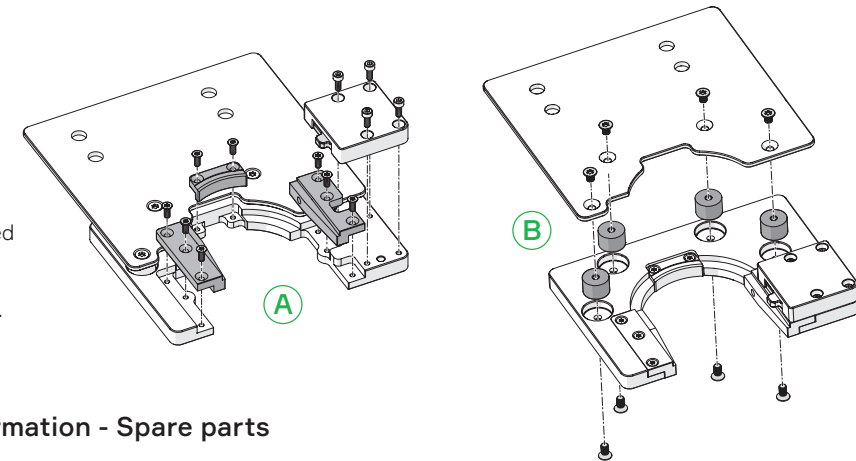


Docking station 105-125  
(art no 0243619)

Docking station 105-165  
(art no 0243620)

## Spare parts

The parts contained in the Spare part kits A and B are highlighted in grey.



## Ordering information - Spare parts

Art. no.	Description
0243244	Spare part kit fixture inserts docking station (A)
0243243	Spare part kit vibration damper 15x10 M4 docking station (B)

## Ordering information - Accessories

Art. no.	Description
0242590	Tool changer complete
0242609	Tool changer tool side
0242610	Tool changer pump side
0243226	Calibration plate - Docking station