

Piab gives you service all over the world.
To find your local distributor, please visit www.piab.com

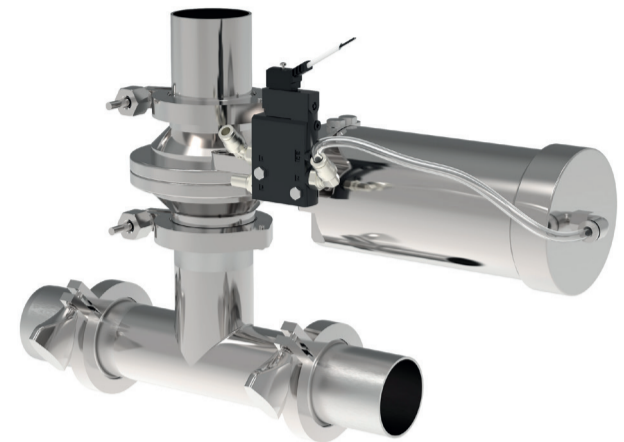
No need to compromise

www.piab.com

N.° ref. 0216150 rev. 00
Piab AB, 06-2019

INSTALLATION

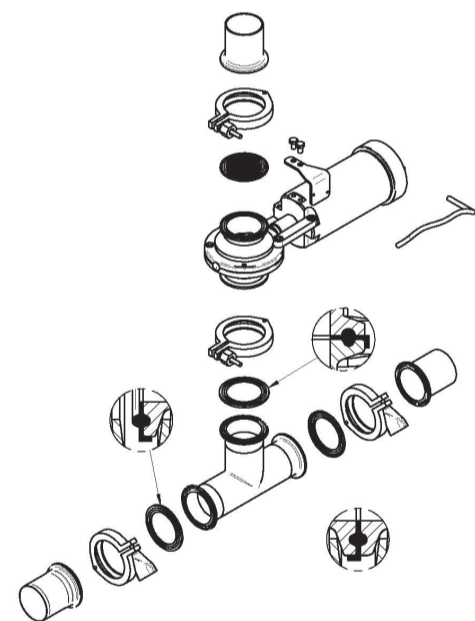
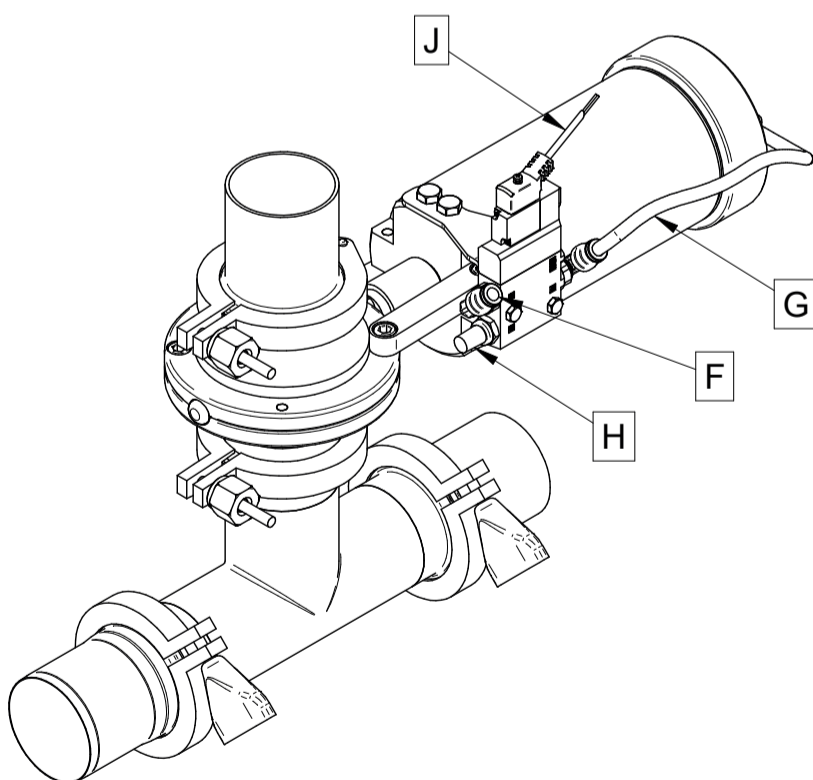
Pipeline emptying unit (PLEU)



www.piab.com



CONNECTION GUIDE



Port	Function	Tubing dimension OD/ID (mm)	Colour	Connections
F	PLEU, air supply	6/4		External feeding
G	PLEU actuator, signal			Internal
H	Exhaust			
J	PLEU, signal			4.ECU (PIN 28, 29)

MOUNTING OF THE PIPELINE EMPTYING UNIT (PLEU) - Option

The pipeline emptying unit is mounted on the product line between the feeding point and just before the first vertical bend. It is recommended to secure the PLEU to the floor or wall with a bracket (not part of the delivery).

Function of the pipeline emptying unit

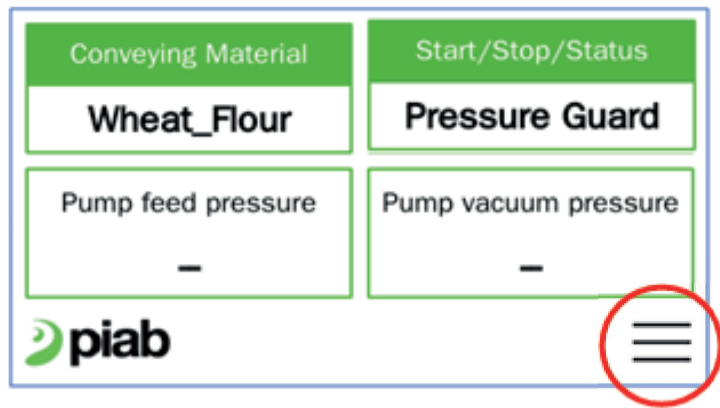
Vacuum conveying systems can lift materials through relatively large vertical distances, 8–25 m, and in some cases even higher. As the conveyor works intermittently there is a risk that, when the pump stops, and the material falls down, a blockage will form at the bottom of the vertical part of the system. To avoid this, the hose/pipe has to be emptied during each conveying cycle from the beginning of the vertical part right up to the conveyor. This may be achieved by inserting a valve that can be opened to let in air before the rise. This means that no material is conveyed before the rise and all material is discharged from the pipe up to the conveyor.

The pipeline emptying unit is SW controlled.

The valve on pipeline emptying unit is closed during the conveying phase, the last seconds of the suction time, the pipeline emptying unit valve will open. No new material from the feeding point will pass the unit, the air/atmosphere from surrounding area will pass thru the valve and push the remaining material in the pipe line into to the vacuum conveyor.

SETTINGS IN ELECTRICAL CONTROL UNIT

Click on main menu.



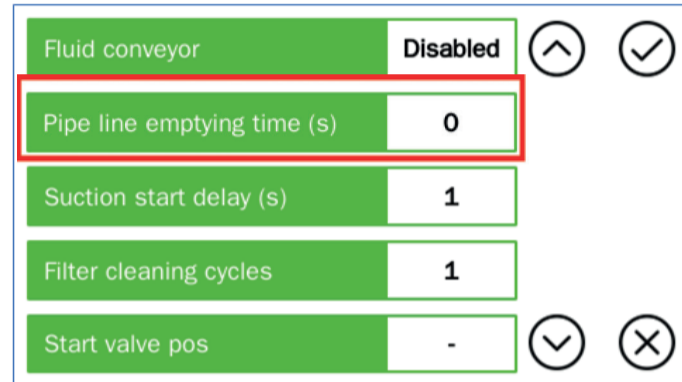
Click on **Material settings**



Create a new material or chose an already created in accordance to electrical control unit manual.



Scroll down to **Pipeline emptying time (s)** and set the time the PLEU valve is open at the end of the charge period. Pipeline emptying time must be less than suction timeout time.

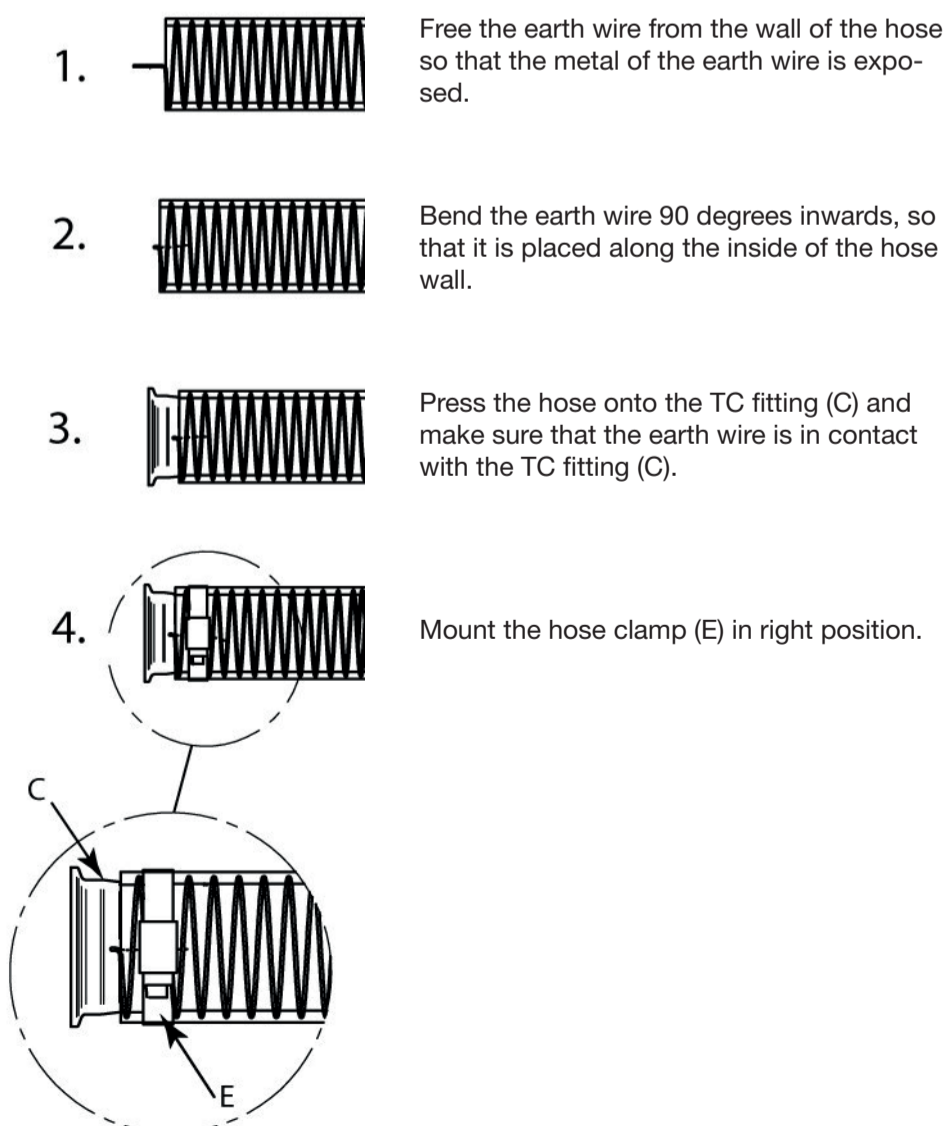


Save the material settings.

GROUNDING OF PLEU

Pipeline emptying unit (PLEU) are grounding via the TC clamp ring or the hose wire. Important to have connection between the steel wire in the hose and TC fitting.

Grounding of hose with a TC fitting (C):



CLEANING INSTRUCTION

Mount the pipeline emptying unit apart. The steel parts can be washed with water and detergent according to local regulations. It is important to clean all parts that come in contact with the conveyed powder. Sealings can be clean with suitable detergent for the sealing material.

SPARE PARTS LIST

Size	Pos.	Qty.	Art nr.	Description
TC Ø32	1	1	0212707	Pipe emptying unit TC 32 w Solenoid valve
TC Ø38	1	1	0212708	Pipe emptying unit TC 38 w Solenoid valve
TC Ø51	1	1	0212709	Pipe emptying unit TC 51 w Solenoid valve
TC Ø63	1	1	0212710	Pipe emptying unit TC 63 w Solenoid valve
TC Ø76	1	1	0212711	Pipe emptying unit TC 76 w Solenoid valve
All sizes	2	1	0212128	Solenoid valve 3/2 24V DC NO w cable
All sizes	3	1	0212025	Cable PUR 10m with plug socket

