

INTENDED USE

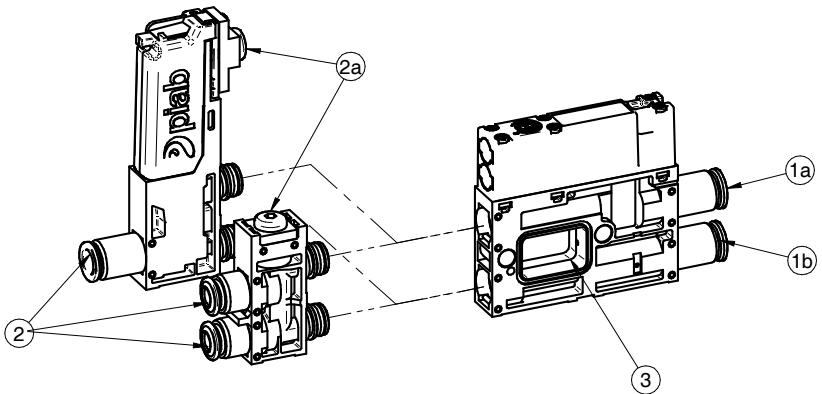
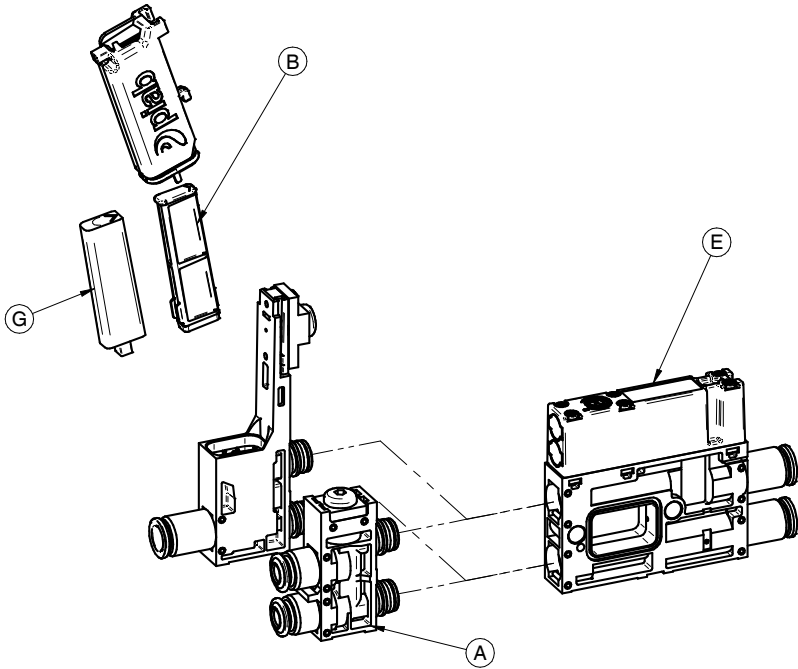
- ▶ The product shall be used to evacuate air (non liquids) from a volume to create vacuum for gripping, holding and processes
- ▶ The product can be used to blow air for surface cleaning and to remove vacuum from a volume
- ▶ The product shall be used in environments within the product's specifications and certifications
- ▶ The product shall be installed in accordance to installation instructions
- ▶ The product shall be maintained in accordance to maintenance instructions
- ▶ Troubleshooting shall be conducted in accordance to manual instructions
- ▶ The safety instructions shall be followed
- ▶ For professional use only.

MISUSE

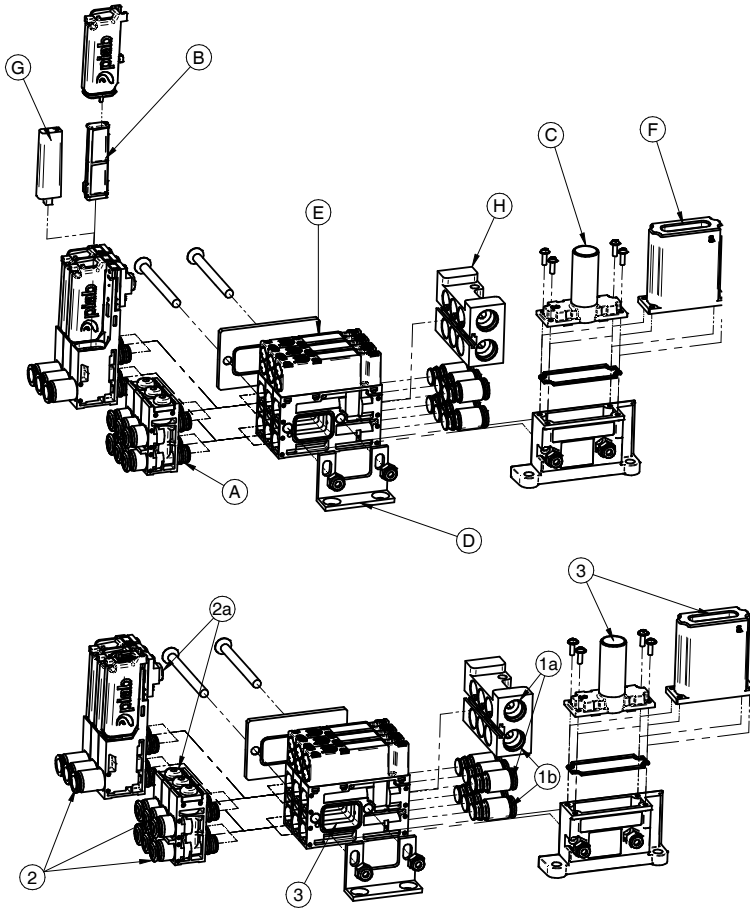
- ▶ Result from readily predictable human behavior.
- ▶ The product shall not be used to evacuate liquids.
- ▶ The product shall not be used to evacuate solid content without the use of filter.
- ▶ The product shall not be used in a fully closed compartment (non ventilated) if not exhaust is piped away.
- ▶ The product shall not be used as stand alone safety system to fulfill international lifting norms.
- ▶ The exhaust shall not be restricted or blocked.
- ▶ The vacuum and exhaust port shall not simultaneous be blocked when unit is generating vacuum.
- ▶ The product shall not be used to create vacuum or blow for other purposes than the intended use.
- ▶ Vacuum and exhaust air can cause severe injuries, keep hands, legs, hair and eyes away from vacuum inlets and exhausts.
- ▶ Do not install or operate you product if damaged.
- ▶ Do not operate the product if compressed air line is not properly secured, loose compressed air lines can cause severe injuries.
- ▶ Using compressed air pressure and/or electrical voltage outside specification can cause severe damage due to performance loss.
- ▶ Blow-off functions or ejector exhaust shall not be used to pressurize sealed compartments such as cylinders and/or tank-volumes.

Overview

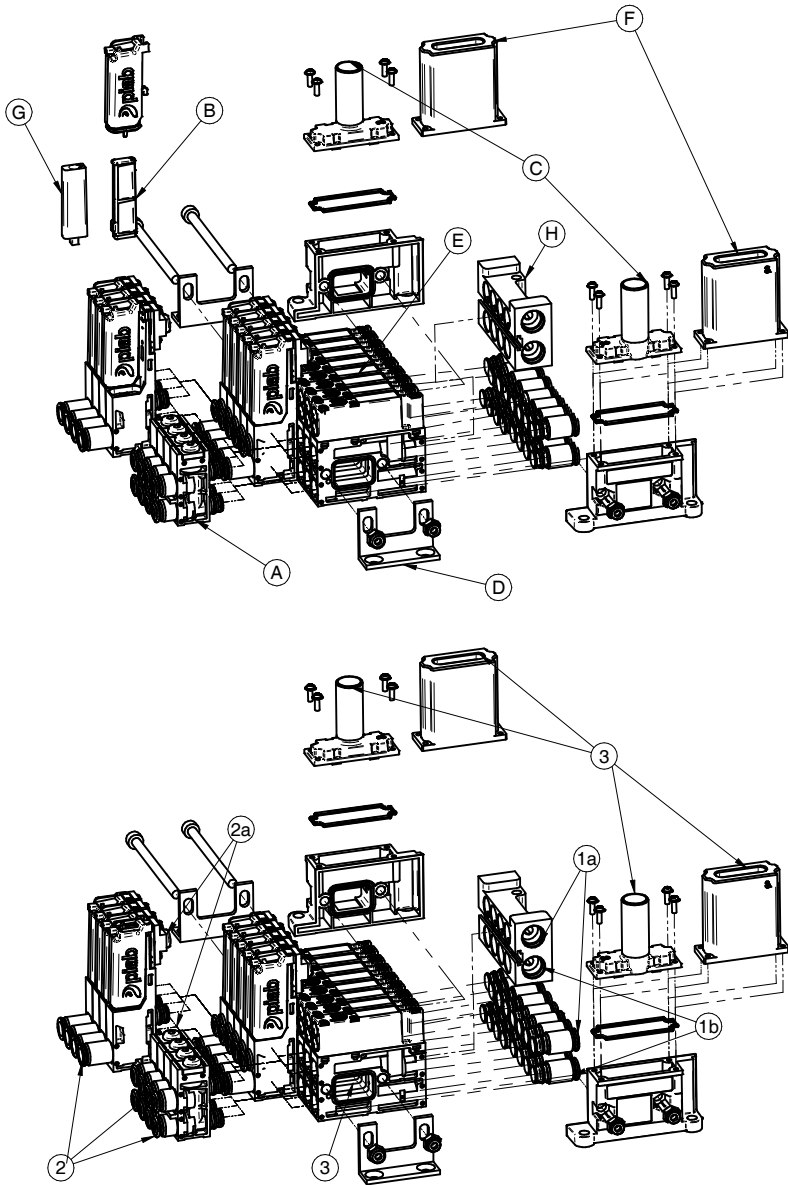
1 channel



1-3 channels



4-8 channels



Pos.	Description	
A	Vacuum connection block	
B	Vacuum filter	
C	Central exhaust	
D	Mounting bracket	Only for 2-8 channels
E	1x COAX® cartridge / 2x COAX® cartridge	
F	Silencer	
G	Filter filler	
H	Common feed	Only for 2-4 channels

Connections

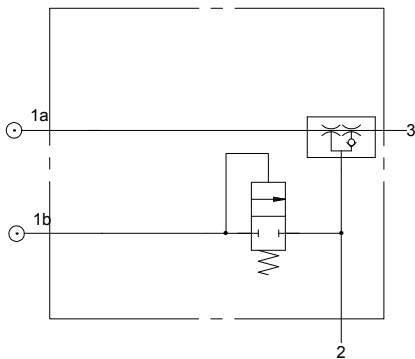
Pos.	Description	Size
1a	Compressed air, vacuum	Ø4 / Ø6 / Ø¼" / Ø ⅛" NPSF
1b	Compressed air, blow off	Ø4 / Ø6 / Ø¼" / Ø ⅛" NPSF
2	Vacuum port	Ø4 / Ø6 / Ø¼"
2a	Vacuum sensing port/ Vacuum port	M5 / Ø4
3	Exhaust / Central exhaust / Silencer	- / OD12* / -

* Outer diameter

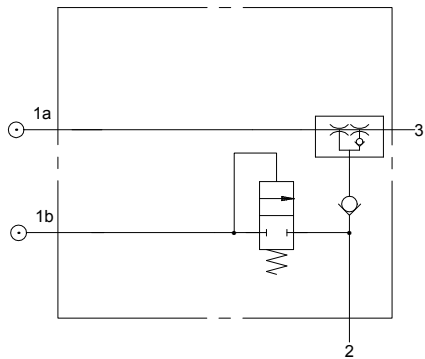
Pneumatic diagram

1. Compressed air, 2. Vacuum, 3. Exhaust

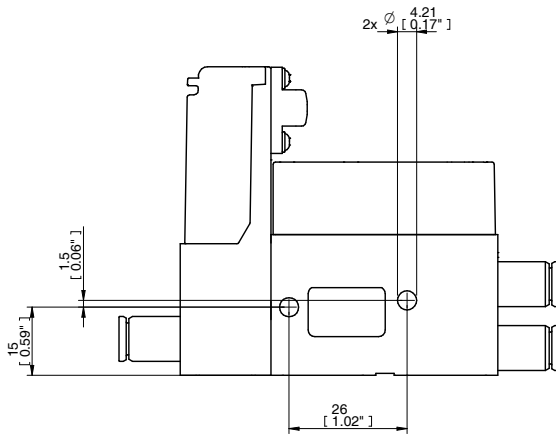
Without non-return valve



With non-return valve



Mounting
1 channel

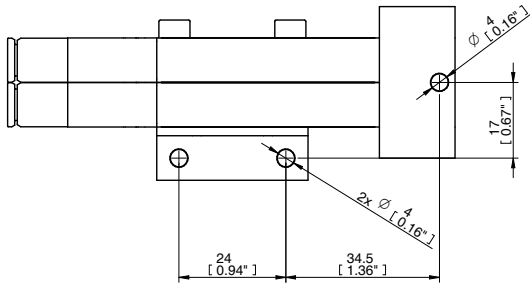


Compressed air quality

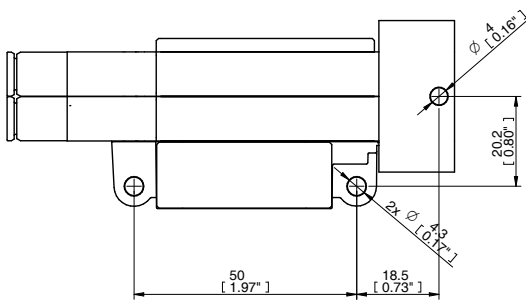
Quality of the compressed air shall fulfil the requirements in DIN ISO 8573-1 class 4

2 channels

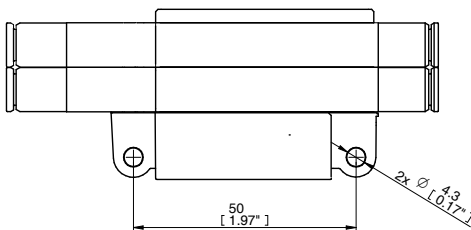
with central exhaust / silencer



with central exhaust and common feed

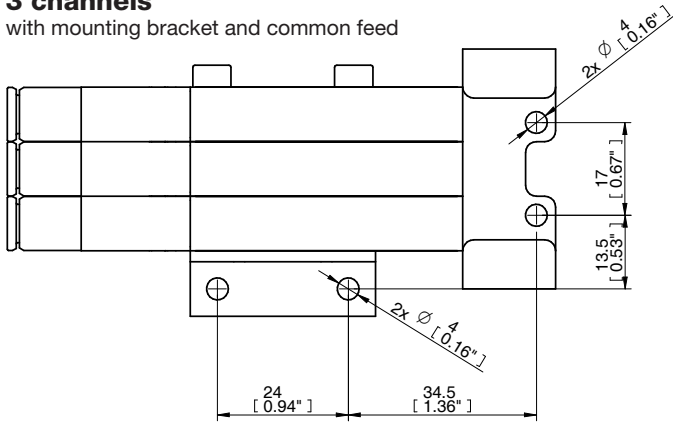


with individual mount (also available together with mounting bracket)

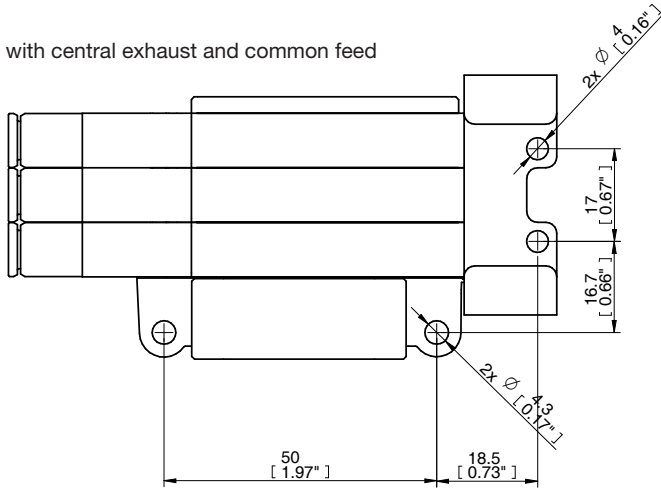


3 channels

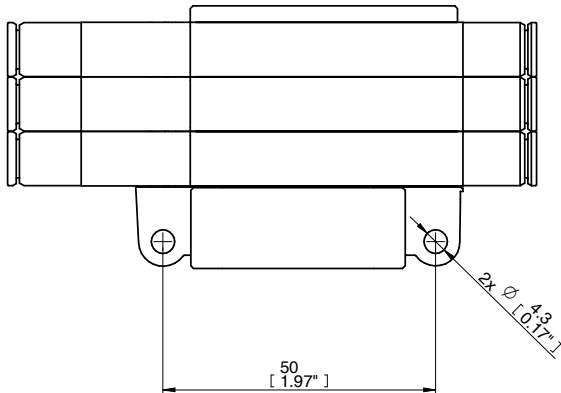
with mounting bracket and common feed



with central exhaust and common feed



with individual mount (also available together with mounting bracket)

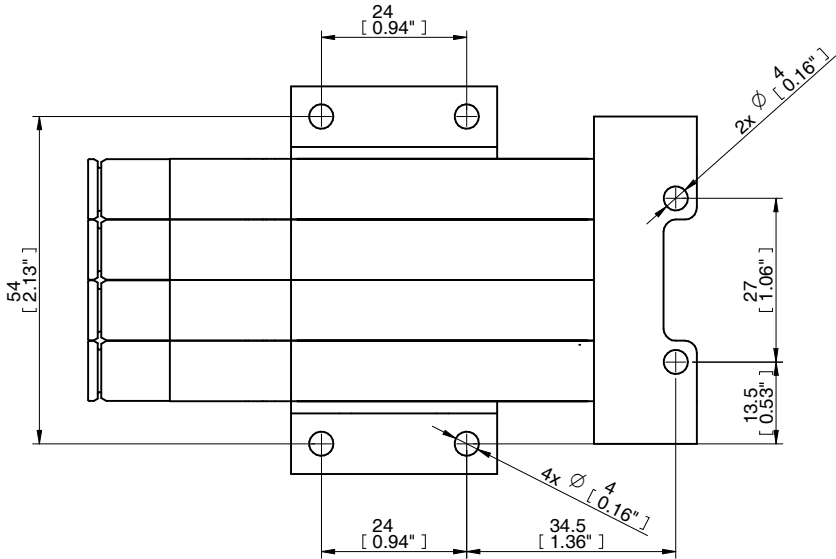


piPUMP10x 1-8 channels

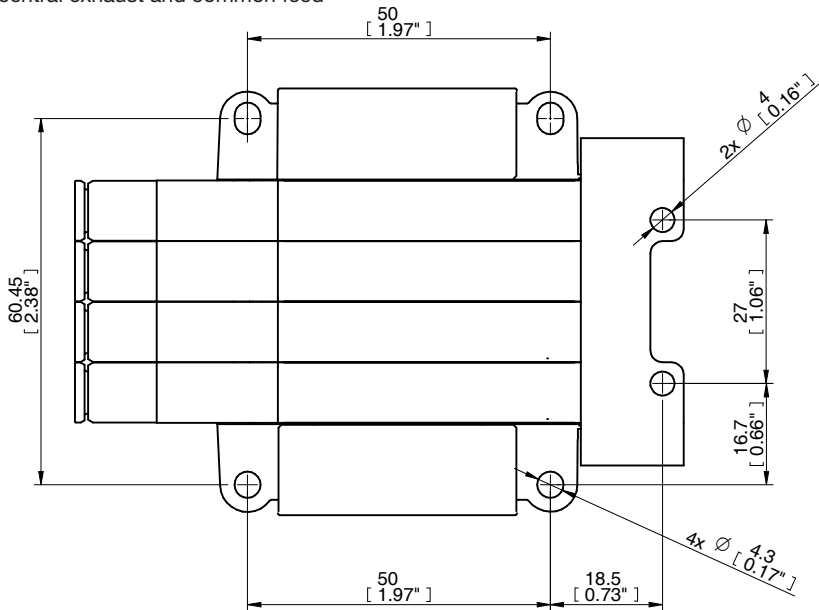


4 channels

with mounting bracket and common feed

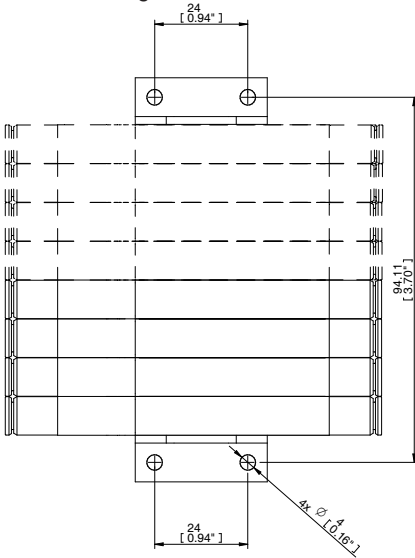


with central exhaust and common feed

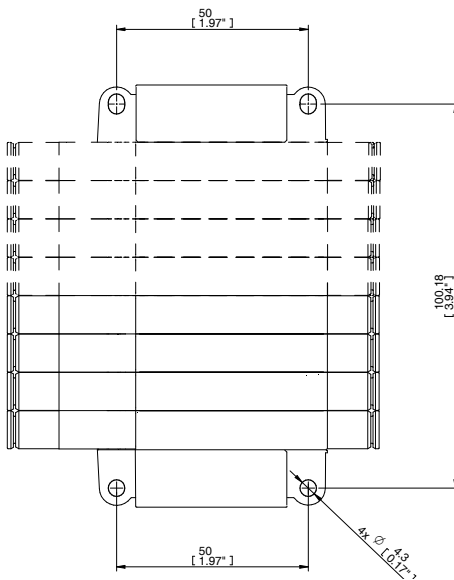


4-8 channels

with mounting bracket



with central exhaust / silencer



	4 channels	5 channels	6 channels	7 channels	8 channels
C	54 [2.13"]	64 [2.52"]	74 [2.91"]	84 [3.31"]	94 [3.70"]
D	60.5 [2.38"]	70.5 [2.78"]	80.5 [3.17"]	90.5 [3.56"]	100.5 [3.96"]

Technical data (per channel)

Pneumatic technical information

	Unit	COAX®							
		Bi03-2		Xi2.5-2		Si02-2		Ti05-2	
		x1	x2	x1	x2	x1	x2	x1	x2
Opt. feed pressure, nozzle	MPa [psi]	0.20 [29.0]		0.50 [72.5]		0.60 [87.0]		0.40 [58.0]	
Max vacuum at opt. pressure	-kPa [-inHg]	82 [24.2]		91 [26.9]		75 [22.1]		84 [24.8]	
Air consumption at opt. pressure	Nl/s [scfm]	0.14 [0.297]	0.28 [0.593]	0.13 [0.275]	0.26 [0.551]	0.11 [0.233]	0.22 [0.466]	0.23 [0.487]	0.46 [0.974]
Max vacuum flow at opt. pressure	Nl/s [scfm]	0.21 [0.445]	0.34 [0.720]	0.23 [0.487]	0.37 [0.784]	0.11 [0.233]	0.42 [0.890]	0.31 [0.657]	0.53 [1.12]

Other data

Temperature range	-10 - 50°C [14-122°F]
Materials	PA, NBR, SS, POM, TPE, AL, PU*

* Silencer



WARNING! Do not install or operate your piPUMP®10X if damaged during transport, handling or use. Damage may result in bursting and cause injury or property damage.



(GB) Safety
(DK) Advarselsymboler
(DE) Warnsymbole
(ES) Señales de advertencia



(FR) Sécurité
(IT) Segnali di avvertenza
(NL) Waarschuwingsymbolen



(NO) Sikkerhet
(PT) Sinais Avisadores
(SE) Säkerhet
(FI) Varoitusmerkit